

PARTS LIST

ITEM	PART	DESCRIPTION	QTY
1	Wall Anchor	Wall Plug	12
2	SL-CAP1503	Capital Wall Jamb	2
3	CA-CAP Jamb Bumpers	Wall Jamb Bumpers	12
4	N/A	ST 3.5x12 Screws	12
5	N/A	ST 4x45 Screws	6
6	CA-CAP952	Capital Anti-Jamb	4
7	CA-CAP 501E1x19	Roller	4
8	SL-CAP 1501	Capital Header	1
9		Glass Panel	2
10	N/A	ST 4x24 Screws	4
11	CA-CAP Bottom Bumpers	Bottom Bumpers	2
12	CA-CAP920	Capital Center Guide	1
13	SL-CAP1502	Capital Curb	1
14	CA-CAPC4101W	Capital Wall Clip	2
15	N/A	Screw Cap	8
16	N/A	ST 4x30 Screws	2
17	N/A	ST 5x30 Screws	2
18	CA-CAP-TB	Towel Bar	1

NOTE: Threads on rollers and anti-jumps require thread locker, sold separately. See instruction 4.

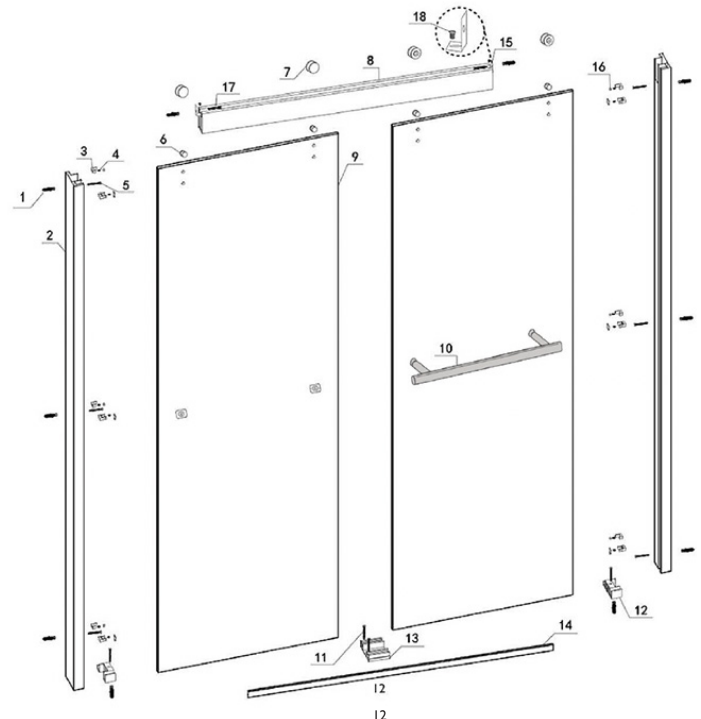
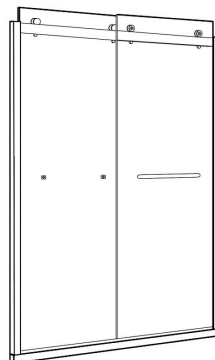
When ordering repair parts, please provide the following information:

1. Model Number
2. Part Number
3. Part Description
4. Finish Color

Required Tools:

To install your shower enclosure, you will need the following:

- Level
- #31 Drill Bit
- 3/16" Carbide Drill Bit (for tile walls)
- Phillips Screwdriver
- Silicone
- Hammer
- Tape Measure



STEP 1

(See Figure 1). Ensure tray is level (1). Measure the position of wall profile (to be vertical) and mark the position, then put into wall anchors (2) (3). Insert the central guide into water guard (4). Place the water guard onto shower curb (5). Straighten wall profile and central guide.

STEP 2

(See Figure 2). Place guide wall onto rail profile (1). Measure and mark position of wall block, then mount with screws (2).

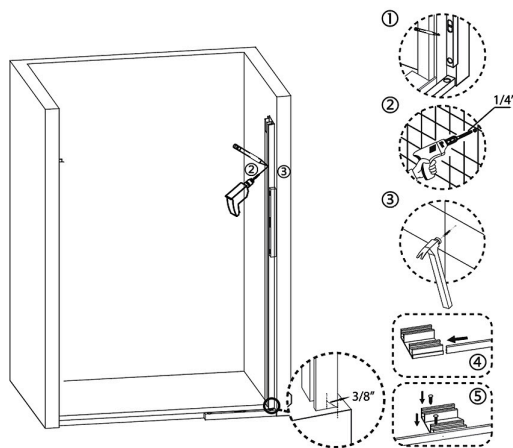


FIGURE 1

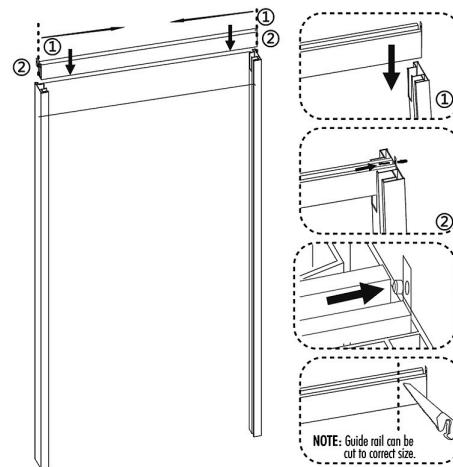


FIGURE 2

STEP 3

(See Figure 3). Install side stoppers then tighten the screws (1).

STEP 4

(See Figure 4). Install rollers and anti-jumping blocks (1) (2). Install the side guide at the bottom of vertical wall profile (3).
NOTE: Thread locker (Loctite® brand or similar) is REQUIRED for all threads on rollers (part #7) and anti-jumps (part #6). Be sure to follow the manufacturers recommendations for cure times when making final adjustments. Thread locker is NOT included in the kit but is readily available at many hardware stores and from many online retailers.

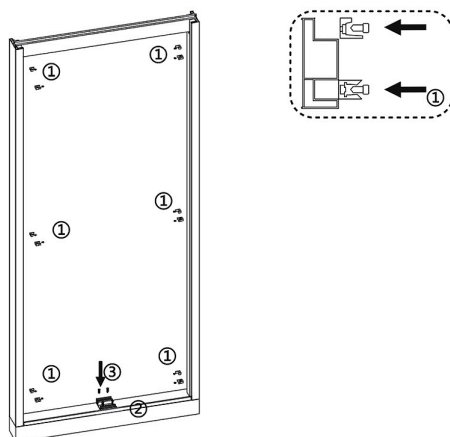


FIGURE 3

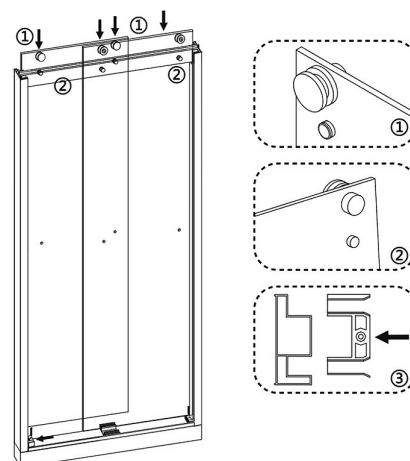


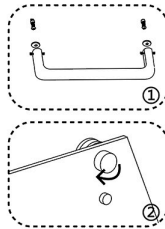
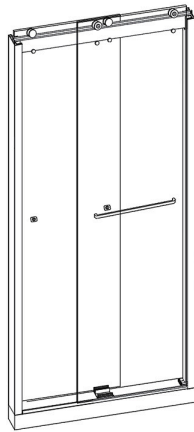
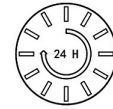
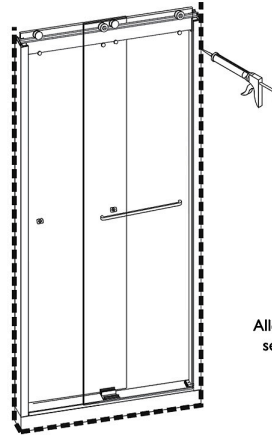
FIGURE 4

STEP 5

(See Figure 5). Install handle (1). Adjust roller until glass panel moves smoothly (2).

STEP 6

(See Figure 6). Apply good quality silicone sealant. Clean all joints areas as recommended.

**FIGURE 5**

Allow 24 hours for sealant to
set for before first shower

FIGURE 6